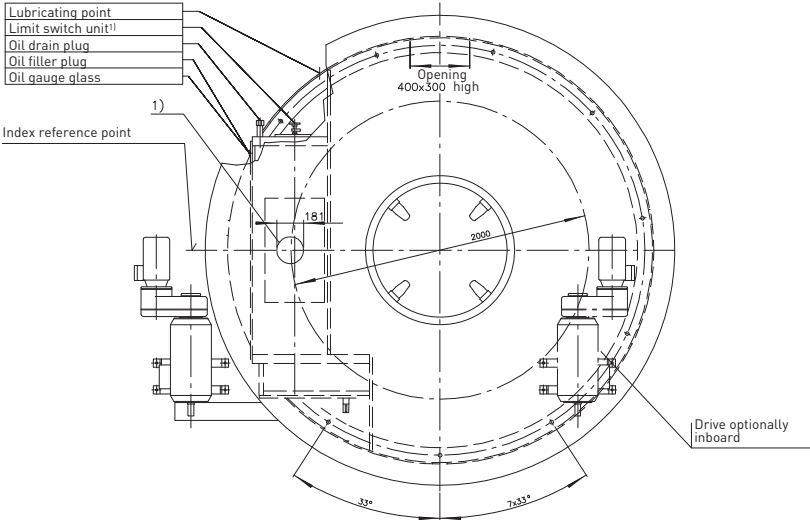
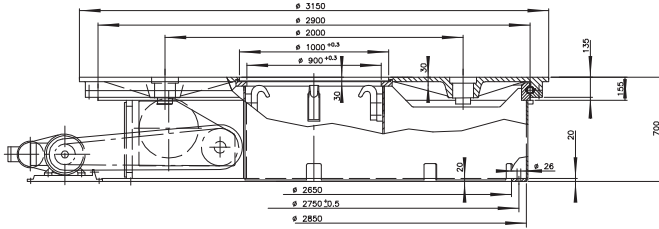


# EDL3150/A3754

## Precision index drives for rotary motions



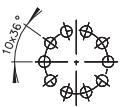
- Lubricating point
- Limit switch unit<sup>1)</sup>
- Oil drain plug
- Oil filter plug
- Oil gauge glass

Index reference point

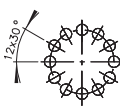
For transportation of the turntable with eyebolts, 4 tapped holes M30x45 deep have been arranged in the area of the cam followers.

<sup>2)</sup> Location of the cam followers at the index reference point  
(Free areas must be provided accordingly in the tool plate)

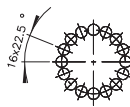
5/10 Indexing steps  
10 cam followers



6/12 Indexing steps  
12 cam followers



8/16 Indexing steps  
16 cam followers



<sup>1)</sup> For the dimensions of limit switch units, accessories or special design, please ask for a separate drawing.

## Technical data

**Static bearing capacity of table plate bearing**  
(theoretic factors of the bearing manufacturer)

$C_{OA} = 5065000 \text{ N}$

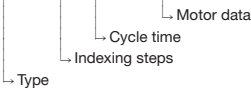
$C_{OR} = 2383000 \text{ N}$

$C_{OM} = 3456000 \text{ Nm}$

Permissible resulting tangential moment, due to process related forces incurred while the table plate is at standstill:  $M_t = 55000 \text{ Nm}$

**Order example:**

ED3150 6 5,6 400 V - 50 Hz



**Indexing steps**

Standard indexing steps: 5,6,8,10,12,16  
further indexing steps on request

**Tool plate**

Mounting of tool plate see drwg.

**Accuracy**

order:  $\pm 29$  angular seconds

**Total weight**

High-precision performance upon request

**Motor**

approx. 5000 kg (depending on size of motor)

**Remark**

C-flange motor to requirements

This type range permits the construction of special models with different technical data. In order to prepare a detailed offer, we would need exact technical information.